

J SERIES™ LEDS

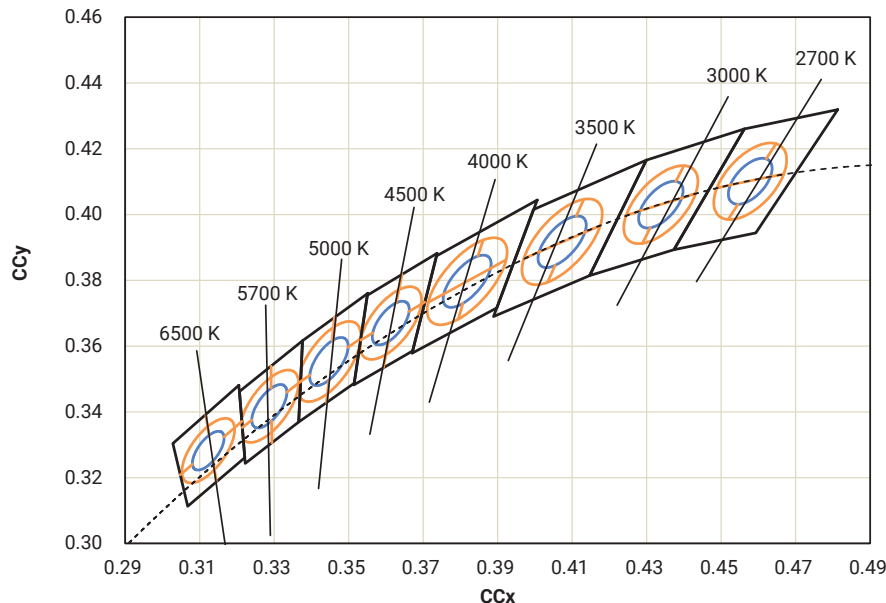
- Cost-optimized LEDs for all lighting applications
- Industry-compatible footprints
- 70, 80 & 90 CRI options for complete 6500 K–2700 K CCT range
- 3-step chromaticity kits aligned with Cree’s EasyWhite® bins



Product Portfolio

Package	Power	Series	3-V	6-V	9-V	12-V	24-V	36-V
5050	5 W	Standard		JR5050	JR5050	JR5050	JR5050	JR5050
	4 W				JQ5050			
3030	1 W	Standard	JK3030	JK3030				
	0.2 W		JB3030					
2835	1 W	Standard	JK2835					
		Value			JK2835			
	0.5 W	High Efficacy	JE2835					
		Standard	JE2835					
	Value	JE2835						
5630	0.2 W	Standard	JB5630					
2016	0.2 W	Standard	JB2016					

CCT & CRI Options



CCT	70 CRI	80 CRI	90 CRI	98 CRI
6500 K	●	●	●	
5700 K	●	●	●	
5000 K	●	●	●	+
4000 K	●	●	●	+
3500 K	●	●	●	
3000 K	●	●	●	+
2700 K	●	●	●	+

● = All J Series LEDs
 + = JE2835 3-V Standard

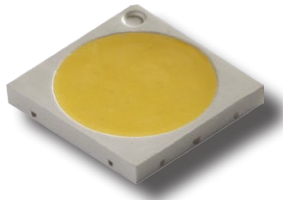


Copyright © 2018 Cree, Inc. All rights reserved. This document is provided for informational purposes only and is not a warranty or specification. The information in this document is subject to change without notice. Cree®, the Cree logo and EasyWhite® are registered trademarks and J Series™ is a trademark of Cree, Inc. J Series products are marketed by Cree, Inc. for the benefit of Cree Venture LED Company Limited.

November 2018 (FS33R2)

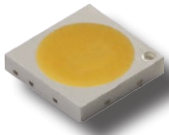
+1 919-313-5300 • 800-533-2583
 xlampsales@cree.com

5050



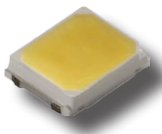
Voltage Class	Product	Series	Typ. Current (mA)	Typ. Voltage (V)	4000 K, 70 CRI		3000 K, 80 CRI		Max. Current (mA)
					Typical Flux (lm)	Typical LPW	Typical Flux (lm)	Typical LPW	
6-V	JR5050 5 W	Standard	400	5.8	420	181	380	164	1000
9-V	JR5050 5 W	Standard	260	8.6	407	182	369	165	660
	JQ5050 4 W	Standard	400	9.5	580	153	520	137	480
12-V	JR5050 5 W	Standard	200	12.3	420	171	380	155	480
24-V	JR5050 5 W	Standard	100	24.5	420	171	380	155	240
36-V	JR5050 5 W	Standard	65	34.5	407	181	369	165	165

3030



Voltage Class	Product	Series	Typ. Current (mA)	Typ. Voltage (V)	4000 K, 80 CRI		3000 K, 90 CRI		Max. Current (mA)
					Typical Flux (lm)	Typical LPW	Typical Flux (lm)	Typical LPW	
3-V	JK3030 1 W	Standard	350	3.2	146	130	119	106	400
	JB3030 0.2 W	Standard	65	2.8	33.5	184	26	143	240
6-V	JK3030 1 W	Standard	150	6.0	146	162	118	131	200

2835



Voltage Class	Product	Series	Typ. Current (mA)	Typ. Voltage (V)	4000 K, 80 CRI		3000 K, 90 CRI		Max. Current (mA)
					Typical Flux (lm)	Typical LPW	Typical Flux (lm)	Typical LPW	
3-V	JE2835 0.5 W	HE	150	2.85	78	182	63	147	240
	JE2835 0.5 W	Standard	150	3	76	169	60	133	240
	JE2835 0.5 W	Value	150	3.15	68	144	55	116	200
6-V	JK2835 1 W	Standard	150	6	151	168	121	134	200
9-V	JK2835 1 W	Value	100	9	130	144	104	116	120

5630



Voltage Class	Product	Series	Typ. Current (mA)	Typ. Voltage (V)	4000 K, 80 CRI		3000 K, 90 CRI		Max. Current (mA)
					Typical Flux (lm)	Typical LPW	Typical Flux (lm)	Typical LPW	
3-V	JB5630 0.2 W	Standard	65	2.8	35	192	25.9	142	240

2016



Voltage Class	Product	Series	Typ. Current (mA)	Typ. Voltage (V)	4000 K, 80 CRI		3000 K, 90 CRI		Max. Current (mA)
					Typical Flux (lm)	Typical LPW	Typical Flux (lm)	Typical LPW	
3-V	JB2016 0.2 W	Standard	60	2.9	25.5	147	20.5	118	150